



Bespoke wood veneers



Trees don't have defects, only character.



Bespoke wood veneers

We are dedicated to bringing the warmth of real wood into your project. Decospan's Bespoke wood veneers are a curated selection of premium fine wood veneers which are suitable for a wide variety of interior applications. The Bespoke Collection has been carefully composed to inspire you and make it possible to select the most appropriate design for your project.

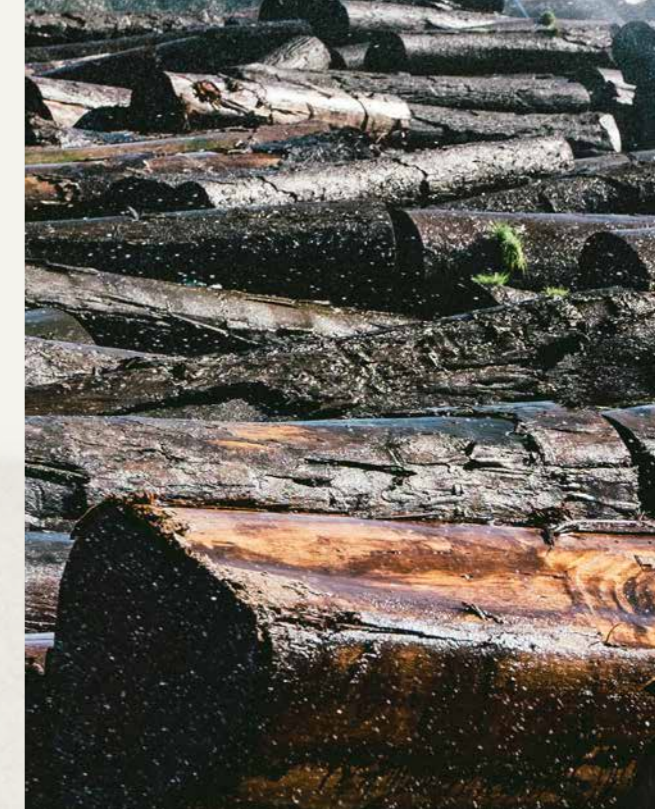
Offering 3 well-known wood species in a completely different way than anything on the market, Decospan distinguishes itself and makes the use of veneer wood transparent and accessible for the specifier, processor and end-user.

1. Alpen White Oak - pg 14
2. Legacy Black Walnut - pg 21
3. Iberian Fumed Eucalyptus - pg 26

“Decospan is the bridge between real wood,
contemporary interior design and technical excellence.”



"The sustainable use of our basic raw material – wood veneer – gets the highest priority and is embedded in our company philosophy."



Careful selection

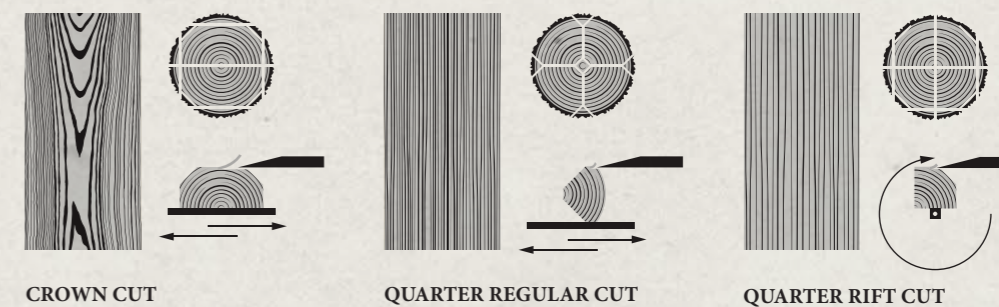
Our veneer curators vast experience and expertise in wood sourcing gives us a distinct advantage unparalleled in our industry. Our network consists of reliable and skilled partners, procuring wood according to a strict quality manual to which only a few key persons have access. Venturing through many forests, our curators select the most exceptional logs to yield veneers suitable for Decospan's Bespoke Collection. Sustainability is just as deeply rooted in our selection process as is quality. Hence Decospan's Pure Wood Charter that all partners are required to sign and comply with. Decospan has been certified under both FSC and PEFC programs for many years and strives to promote sustainable forestry.



Controlled slicing

Veneer is produced by slicing a log in thin layers with a blade. In contrast to solid wood, which is sawn, veneer makes optimal use of the log without any sawing loss. This is how we make sure that this precious raw material is used as optimal as possible. We have partnerships with veneer factories that go back many years and where the exchange of experience and knowledge have led to unique veneer products.

Cutting a log can be done in various ways. Each way produces a different pattern. Veneer retains the natural look and feel of real wood as well as its unique properties, showing authentic color and pattern variations. That special expression is the basis of a beautiful sheet.





Consistent grading

Every tree is unique. By definition, we therefore never produce twice the same. And that makes our craft just as beautiful. All veneer bundles are assessed in our quality center and are classified in the correct category by specialists. A quality matrix with more than 50 different sub-qualities demonstrates how accurately we do this. Because we grade very consistently and bring a sustained quality standard to the market, customers worldwide choose our products.

Precision splicing

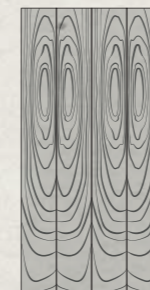
The selected jointing technique is the main factor in the look and feel of your project. It influences the ambiance of the project. Because this is so critical, we made it our mission to master this skill like nobody else.

Bookmatch is the standard jointing method. The sliced strips of veneer are jointed mirrored, two by two. This technique clearly shows the pattern variations of the tree in the jointed sheet.

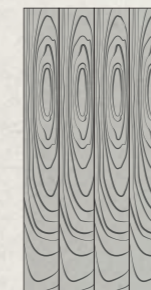
Slipmatch is different because the veneer strips are matched one after the other and jointed without flipping. This is the recommended jointing technique if the veneer should be stained. As all strips have the same side up, there is no color difference between the strips.

Reverse slipmatch is a variation on the regular slipmatch: the veneer is not flipped but alternately jointed head to foot. Due to this technique, the wood structure is more evenly spread throughout the veneer sheet.

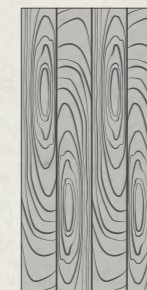
Mix-Matched is literally what it says: mixing and matching. The veneer strips are jointed randomly, creating an interesting yet cohesive effect. Mix-matched is the veneer alternative for the plank effect of solid wood. It is possible to create a mix of both crown cut and quarter cut, or use crown cut only or quarter cut only. At Decospan mix-matching of veneers is taken to a special level with the use of specialized splicing machines and a team of dedicated artisans whom carefully pre-select the veneers for this process.



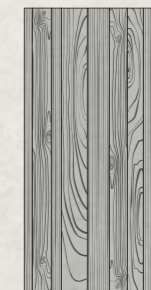
BOOKMATCH



SLIPMATCH

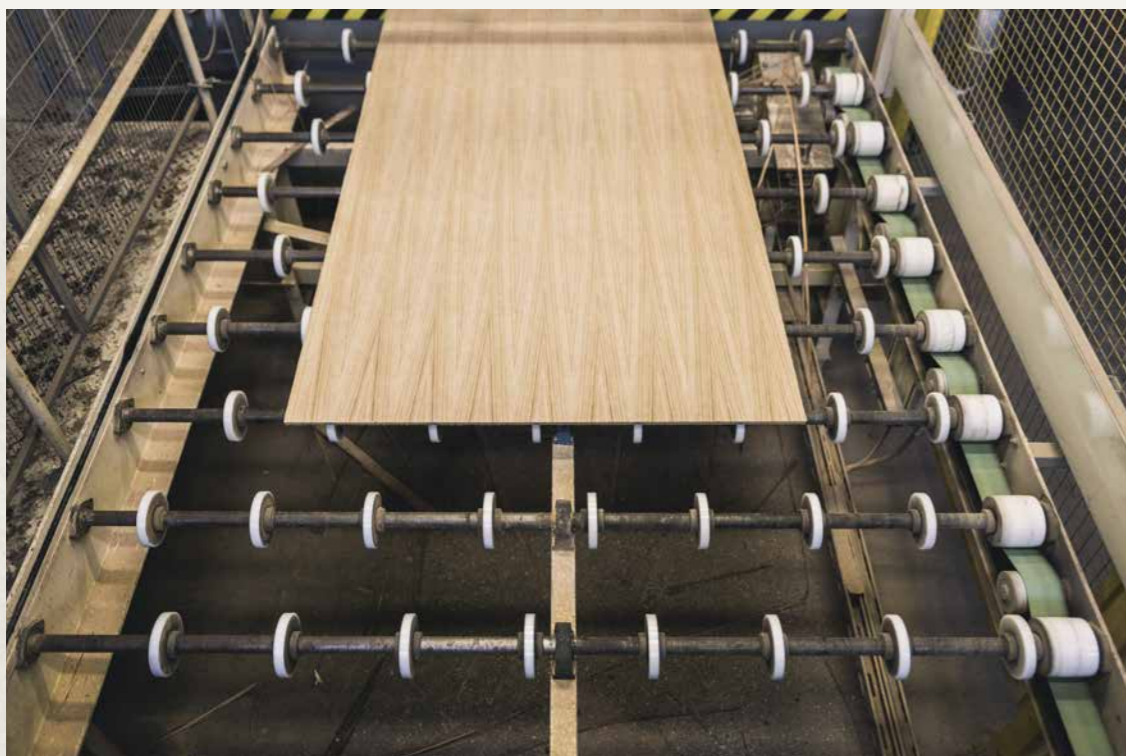


REVERSE
SLIPMATCH



MIX-MATCHED





Years of pressing technology knowledge

We handle the most diverse types of wooden substrates in different sizes. Depending on the order, it is determined automatically with industry 4.0 technology in which of our presses the veneer is brought together with the base board. What at first sight seems to be an obvious task, however, is the result of years of know-how. It's like an iceberg: what you see physically is just a small part of a vast underlying mass of knowledge and experience. Manufacturing a high quality bespoke veneered panel is not a simple task, but a skillful art.

The main types of core material that we process are:

- MDF (including fire retardant & moisture resistant options)
- Chipboard (including fire retardant & moisture resistant options)
- Blockboard
- Plywood (including poplar, birch, WBP and fire retardant options)

Sustainable manufacturing

On average, 30% of the energy we use in our production is solar energy, generated by the solar panels we have installed at all our production sites. The remaining 70% is green energy that we source from our windmills or purchase from the energy supplier.

We use our waste wood to bring the machinery up to the right temperature. It is also how we heat our business premises in the winter months. We ensure our buildings make optimum use of natural daylight so that we do not have artificial lighting turned on unnecessarily.



1



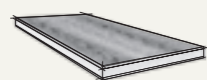
Alpen White Oak

Driven by our passion for wood and strengthened by our years of experience, Decospan went in search of the most exceptional white oak. We found this in a unique place in the heart of Europe. The exceptional soil and climate in this region have had such an influence on the growth process of the oak trees that the color and structure of the wood is exceptionally unique. The white-yellow color is appreciated by the most renowned architects, designers and builders. The pronounced grain and physical properties increase the natural character all the more. When this kind of oak is cut on rift, the result is truly amazing. No matter how hard we try, the beauty of white oak from this growth area can hardly be put into words, you have to experience it yourself.

Features:

- Premium white oak
- European origin
- Single source
- Distinctive wood grain
- Consistency in grading
- Versatile and easy to work with
- Architectural appearance

AVAILABILITY



Veneered panels



Flexible veneer sheets



Laminated veneers



Edge banding





AWO-R-MM



AWO-C-BM
Alpen White Oak
Slicing: Crown Cut
Jointing: Book Matched



AWO-R-BM
Alpen White Oak
Slicing: Rift Cut
Jointing: Book Matched



AWO-R-SM
Alpen White Oak
Slicing: Rift Cut
Jointing: Slip Matched



AWO-R-MM
Alpen White Oak
Slicing: Rift Cut
Jointing: Mix-Matched



AWO-CR-MM
Alpen White Oak
Slicing: Crown & Rift Cut
Jointing: Mix-Matched



AWOR-CR-MM
Alpen White Oak Rustic
Slicing: Crown & Quarter Cut
Jointing: Mix-Matched



AWO-R-SM



AWO-R-BM

2



Legacy Black Walnut

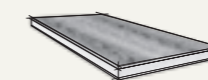
Black walnut is a true classic, inextricably linked to the vast forests of the United States. This popular type of wood has since conquered the whole world and can be found everywhere which caused a loss of respect, quality and care. The quality of Decospan's Legacy Walnut is unique and unexpected as only the best logs are selected for further processing into veneers.

We truly respect nature's gift and we strive to allow as many people as possible to enjoy it. That's why we use strict standards and we use a sophisticated grading method, so our veneers and panels can be found in bespoke furniture that is created with the intention of being kept for generations to come, a legacy item.

Features:

- Premium black walnut veneer
- Distinctive wood grain and tone
- Carefully sourced from well managed forests
- Consistency in grading
- Versatile and easy to work with
- Architectural appearance

AVAILABILITY



Veneered panels



Flexible veneer sheets



Laminated veneers



Edge banding



LBW-C-BM
Legacy Black Walnut
Slicing: Crown Cut
Jointing: Book Matched



LBW-Q-BM
Legacy Black Walnut
Slicing: Quarter Cut
Jointing: Book Matched



LBW-Q-SM
Legacy Black Walnut
Slicing: Quarter Cut
Jointing: Slip Matched



LBW-Q-MM
Legacy Black Walnut
Slicing: Quarter Cut
Jointing: Mix-matched



LBW-CQ-MM
Legacy Black Walnut
Slicing: Crown & Quarter Cut
Jointing: Mix-matched



LBWR-CQ-MM
Legacy Black Walnut Rustic
Slicing: Crown & Quarter Cut
Jointing: Mix-matched



LBW-CQ-MM



LBW-C-BM



LBW-C-BM

3



Iberian Fumed Eucalyptus

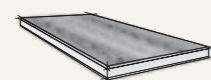
Common in the Iberian region, eucalyptus is a very rewarding wood species in contemporary interior design. The wood has a very nice structure with clearly distinguishable growth rings. The smoking process gives the veneer an intense dark color with variations from light golden brown to intense dark brown.

Fuming wood is a technique which has already been in use for a long time to lessen color differences and obtain a honey-brown to deep black color. For this Iberian Fumed Eucalyptus, our artisans use old world techniques adapted for modern technology. Under their watchful eyes the wood is smoked in modified kiln dryers in a precision environment.

Features:

- Finest natural eucalyptus
- Typical wood grain
- Carefully sourced from well managed sources
- Golden brown to intense dark brown color due to the smoking process
- Versatile and easy to work with

AVAILABILITY



Veneered panels



Flexible veneer sheets



Laminated veneers



Edge banding





IFE-Q-MM



IFE-C-BM *
Iberian Fumed Eucalyptus
Slicing: Crown Cut
Jointing: Book matched



IFE-Q-BM *
Iberian Fumed Eucalyptus
Slicing: Quarter Cut
Jointing: Book matched



IFE-Q-SM *
Iberian Fumed Eucalyptus
Slicing: Quarter Cut
Jointing: Slip matched



IFE-Q-MM *
Iberian Fumed Eucalyptus
Slicing: Quarter Cut
Jointing: Mix-matched



IFE-CQ-MM *
Iberian Fumed Eucalyptus
Slicing: Crown & Quarter Cut
Jointing: Mix-matched



*** Iberian Fumed Eucalyptus figured also available on request !**

Bespoke wood veneers

Configure your own panels at www.decospan.com/bespoke

	MODERN LOOK					RUSTIC LOOK
	Book matched		Slip matched	Mix-matched		Mix-matched
Alpen White Oak	Crown AWO-C-BM	Rift AWO-R-BM	Rift AWO-R-SM	Rift AWO-R-MM	Crown & Rift AWO-CR-MM	Crown & Rift AWR-CR-MM
Legacy Black Walnut	Crown LBW-C-BM	Quarter LBW-Q-BM	Quarter LBW-Q-SM	Quarter LBW-Q-MM	Crown & Quarter LBW-CQ-MM	Crown & Quarter LBWR-CQ-MM
Iberian Fumed Eucalyptus*	Crown IFE-C-BM	Quarter IFE-Q-BM	Quarter IFE-Q-SM	Quarter IFE-Q-MM	Crown & Quarter IFE-CQ-MM	-

* Iberian Fumed Eucalyptus figured available on request



Please contact us.
Decospan USA
Head of Decospan USA
Jeff Honerkamp
Email: jeff.honerkamp@decospan.com
(P) +1 (917) 573-6775

www.decospan.com

© Decospan 2020 - Nothing from this brochure may be reproduced without written prior permission.
Please note that the information in this brochure may be outdated and a new version may already have been issued. That is why we recommend you to always consult our website to download the most recent version. The photos of the different wood species, as shown in this brochure, are a representation of a unique part of wood and are not binding for future deliveries.
Decospan is committed to the continuous improvement of its products and services, therefor the actual products may differ from the products and pictures in this brochure. Decospan disclaims any liability pursuant to the variations that may occur between the products and pictures in this brochure and the actual products. All content in this brochure is for information purposes only and no rights can be obtained therefrom.
The processor is always expected to do an incoming inspection of the products before further processing. One the processing is started (sawing, sanding, staining, lacquering...) the delivery is considered as accepted. All treatments as to staining and lacquering of a veneered panel is beyond the responsibility of the manufacturer Decospan.

Special thanks to: Sophie Lecot & De Laere Décor (p16), Obumex (p18), Design & Interior and photography by Liesbet Goetschalckx (p19), DMA architectures – Eduardo Di Muzio (p23), Pinkeye & Gielissen (p24), Beddeleem (p25), Pinkeye & Luyten Interior Contractors (p28) and everyone who contributed to this brochure.

